



# PANDEMIC SOLUTIONS

**NEW** BACK TO WORK  
SUMMER 2020

Posters • Signs • Labels • Tapes • Floor Signs



# Go Beyond Standard... CUSTOMIZE IT!

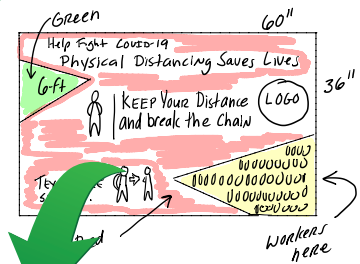
Whatever your regulations or standards, design products that meet **YOUR** needs, free of charge.

Choose from a range of quality materials sourced in the U.S.A., protected with our one of a kind Sign Muscle® coating to make it last.

- No charge for artwork
- 2 Day turnaround time
- Made in the U.S.A.
- No minimums
- Free Sign Muscle® protective coating



## 1 FROM IDEA



## 2 TO PROOF



## 3 TO REALITY





# Table of Contents:

Illness Prevention Signs .....4-7

**Key Products** Illness Prevention Posters .....8-10

**Key Products** Job Site/Facility Signs & Banners .....11-13

Labels .....14-16

**Key Products** Social Distancing Floor Markings .....17-22

Floor Marking Tapes & Shapes .....23-24

Temporary Directional Signage .....25-27

Work Station Virus Protection .....28

Acrylic PPE Dispensers .....29

Biohazard .....30

**Key Products** Back to Work Kits ..... 31-32

## CDC Handwashing Guidelines

Follow these five steps every time:

**WET** Wet your hands with clean, running water (warm or cold), and apply soap.

**LATHER** Lather your hands by rubbing them together with the soap. Lather the backs of your hands, between your fingers, and under your nails.

**SCRUB** Scrub your hands for at least 20 seconds. Need a timer? Hum the “Happy Birthday” song twice.

**RINSE** Rinse your hands well under clean, running water.

**DRY** Dry your hands using a clean towel or air dry them.

\*Source CDC.gov

# Signs

Post signs in key locations around your facility identifying the importance of, and best tips for hand washing, as well as other safeguards for preventing illness in the workplace.

## Material Reference Chart:

- PSV** Pressure Sensitive Vinyl
- PBR** Removable Adhesive Backed Vinyl
- RB** Rigid Plastic
- AL** Aluminum



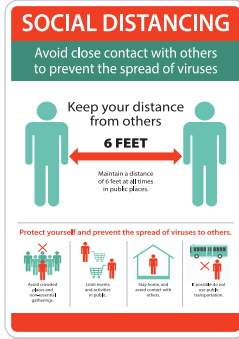
## Social Distancing



PBR 14 x 10 M611PBR  
RB 14 x 10 M611RB



PBR 14 x 10 M0146PBR  
RB 14 x 10 M0146RB



PBR 14 x 10 M0148PBR  
RB 14 x 10 M0148RB



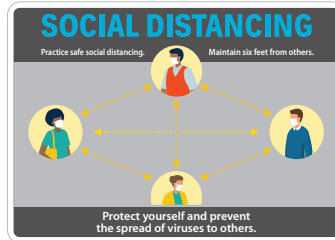
PBR 14 x 10 M0150PBR  
RB 14 x 10 M0150RB



AL 10 x 14 NGA38AB  
PSV 10 x 14 NGA38PB  
RB 10 x 14 NGA38RB



AL 10 x 14 M617AB  
PSV 10 x 14 M617PB  
RB 10 x 14 M617RB



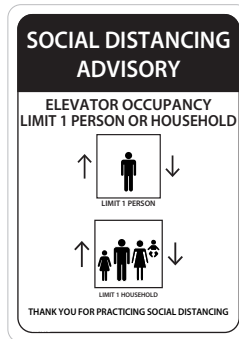
AL 10 x 14 M618AB  
PSV 10 x 14 M618PB  
RB 10 x 14 M618RB



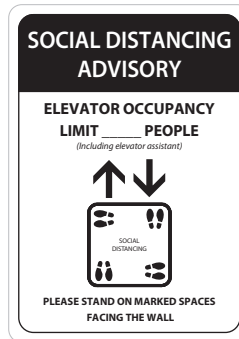
AL 10 x 14 M619AB  
PSV 10 x 14 M619PB  
RB 10 x 14 M619RB



AL 10 x 14 M620AB  
PSV 10 x 14 M620PB  
RB 10 x 14 M620RB



PSV 14 x 10 M615PB  
RB 14 x 10 M615RB



PSV 14 x 10 M616PB  
RB 14 x 10 M616RB





## Hand Washing



PSV 10 x 7 WH1P  
PSV 14 x 10 WH1PB  
PBR 14 x 10 WH1PBR  
PBR 10 x 7 WH1PR  
RB 14 x 10 WH1RB



PSV 10 x 7 WH2P  
PSV 14 x 10 WH2PB  
PBR 14 x 10 WH2PBR  
PBR 10 x 7 WH2PR  
RB 14 x 10 WH2RB



PSV 10 x 7 WH3P  
PSV 14 x 10 WH3PB  
PBR 14 x 10 WH3PBR  
PBR 10 x 7 WH3PR  
RB 14 x 10 WH3RB



PSV 10 x 7 WH4P  
PSV 14 x 10 WH4PB  
PBR 14 x 10 WH4PBR  
PBR 10 x 7 WH4PR  
RB 14 x 10 WH4RB



PSV 14 x 10 N520PB  
RB 14 x 10 N520RB  
PBR 14 x 10 N520PBR



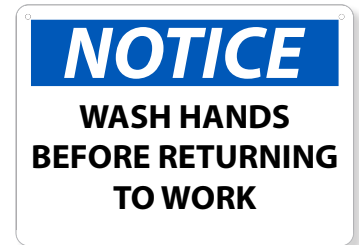
PSV 7 x 10 WH6P  
PSV 10 x 14 WH6PB  
PBR 10 x 14 WH6PBR  
PBR 7 x 10 WH6PR  
RB 10 x 14 WH6RB



RB 10 x 14 N247RB  
PSV 10 x 14 N247PB  
AL 10 x 14 N247AB

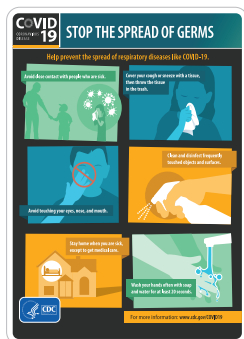


PSV 7 x 10 WH5P  
PSV 10 x 14 WH5PB  
PBR 10 x 14 WH5PBR  
PBR 7 x 10 WH5PR  
RB 10 x 14 WH5RB



AL 10 x 14 N43AB  
RB 10 x 14 N43RB  
PSV 10 x 14 N43PB

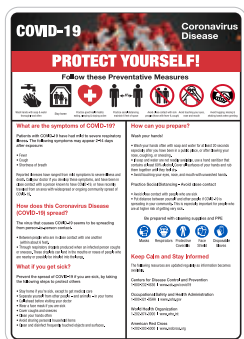
## Visitor Precautions



PBR 14 x 10 M0139PBR  
RB 14 x 10 M0139RB



PBR 14 x 10 M0140PBR  
RB 14 x 10 M0140RB



PBR 14 x 10 M0141PBR  
RB 14 x 10 M0141RB



PBR 14 x 10 M0142PBR  
RB 14 x 10 M0142RB

### Material Reference Chart:

**PSV** Pressure Sensitive Vinyl  
**PBR** Removable Adhesive Backed Vinyl  
**RB** Rigid Plastic  
**AL** Aluminum

## Entrance Guidelines



AL 14 x 10 NGA39AB  
 PSV 14 x 10 NGA39PB  
 RB 14 x 10 NGA39RB



AL 14 x 10 ESN523AB  
 PSV 14 x 10 ESN523PB  
 RB 14 x 10 ESN523RB



PBR 14 x 10 ESN520PBR  
 RB 14 x 10 ESN520RB  
 AL 14 x 10 ESN520AB



PBR 14 x 10 M0155PBR  
 RB 14 x 10 M0155RB



PBR 14 x 10 M0155PBRSP  
 RB 14 x 10 M0155RBSP



AL 14 x 10 M614AB  
 PSV 14 x 10 M614PB  
 RB 14 x 10 M614RB



AL 10 x 14 N523AB  
 PSV 10 x 14 N523PB  
 RB 10 x 14 N523RB



AL 10 x 14 SPNGA37AB  
 PBR 10 x 14 SPNGA37PBR  
 RB 10 x 14 SPNGA37RB

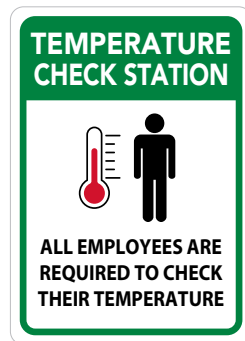


AL 10 x 14 NGA37AB  
 PBR 10 x 14 NGA37PBR  
 RB 10 x 14 NGA37RB

## Temperature Check



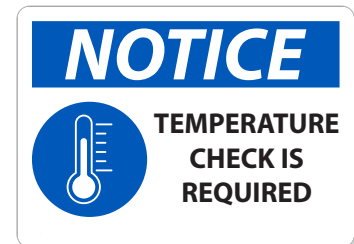
AL 14 x 10 ESN522AB  
 PSV 14 x 10 ESN522PB  
 RB 14 x 10 ESN522RB



AL 14 x 10 M612AB  
 PSV 14 x 10 M612PB  
 RB 14 x 10 M612RB



AL 10 x 14 M613AB  
 PSV 10 x 14 M613PB  
 RB 10 x 14 M613RB



AL 10 x 14 N522AB  
 PSV 10 x 14 N522PB  
 RB 10 x 14 N522RB

### Material Reference Chart:

- PSV** Pressure Sensitive Vinyl
- PBR** Removable Adhesive Backed Vinyl
- RB** Rigid Plastic
- AL** Aluminum



## Facility Protocol



PSV 7 x 10 N519P  
 PSV 10 x 14 N519PB  
 PBR 10 x 14 N519PBR  
 PBR 7 x 10 N519PR



PBR 10 x 14 N521PBR  
 RB 10 x 14 N521RB



PSV 7 x 10 N518P  
 PSV 10 x 14 N518PB  
 PBR 10 x 14 N518PBR  
 PBR 7 x 10 N518PR



PSV 14 x 10 ESN518PB  
 PBR 14 x 10 ESN518PBR  
 AL 14 x 10 ESN518AB  
 RB 14 x 10 ESN518RB



PSV 14 x 10 ESN519PB  
 PBR 14 x 10 ESN519PBR  
 AL 14 x 10 ESN519AB  
 RB 14 x 10 ESN519RB

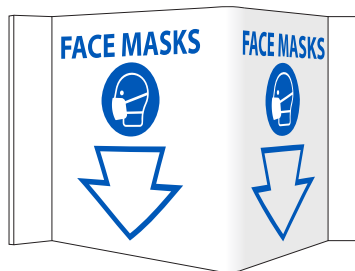
**Material Reference Chart:**

- PSV** Pressure Sensitive Vinyl
- PBR** Removable Adhesive Backed Vinyl
- RB** Rigid Plastic
- AL** Aluminum

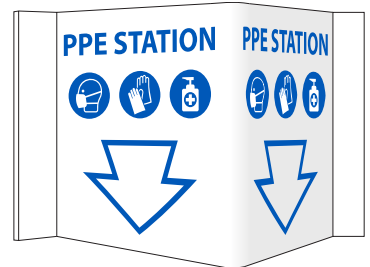
## 3D Wall Signs



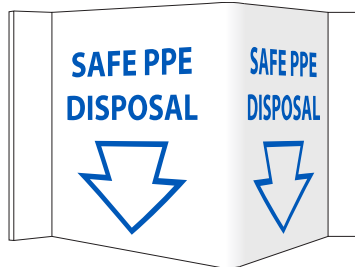
VS54



VS55



VS56



VS57

DESCRIPTION
6 x 9 Rigid 3MM Vinyl



# Posters

Provide daily reminders to help reduce workplace transmission of communicable diseases.

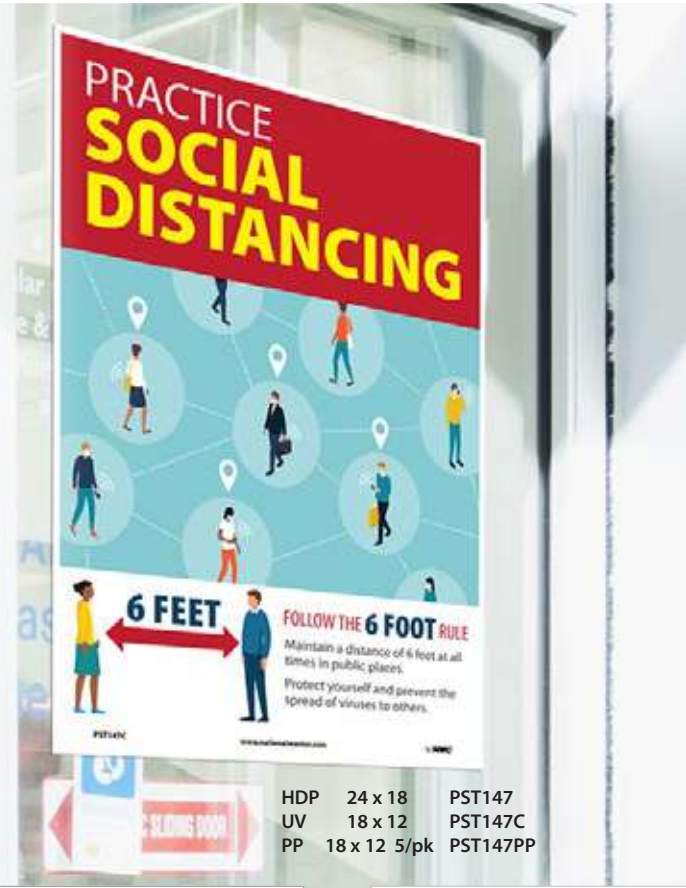
## Social Distancing



HDP 24 x 18 PST148  
 UV 18 x 12 PST148C  
 PP 18 x 12 5/pk PST148PP



HDP 24 x 18 PST150  
 UV 18 x 12 PST150C  
 PP 18 x 12 5/pk PST150PP



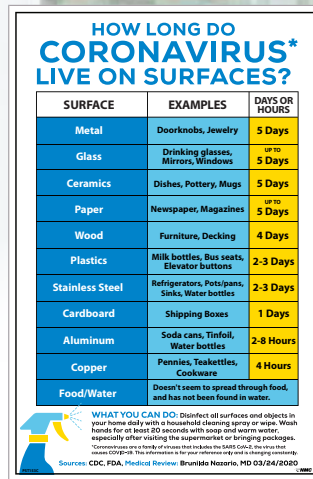
## Illness Prevention



HDP 24 x 18 PST155  
 UV 18 x 12 PST155C  
 PP 18 x 12 5/pk PST155PP



HDP 24 x 18 PST155SP  
 UV 18 x 12 PST155CSP  
 PP 18 x 12 5/pk PST155PPSP

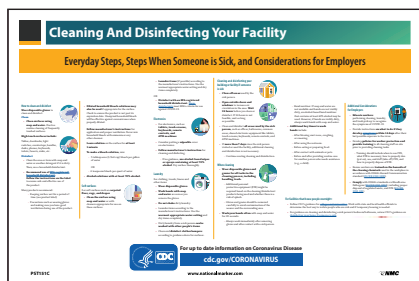


SURFACE	EXAMPLES	DAYS OR HOURS
Metal	Doorknobs, Jewelry	5 Days
Glass	Drinking glasses, Mirrors, Windows	UP TO 5 Days
Ceramics	Dishes, Pottery, Mugs	5 Days
Paper	Newspaper, Magazines	UP TO 5 Days
Wood	Furniture, Decking	4 Days
Plastics	Milk bottles, Bus seats, Elevator buttons	2-3 Days
Stainless Steel	Refrigerators, Pots/pans, Sinks, Water bottles	2-3 Days
Cardboard	Shipping Boxes	1 Day
Aluminum	Soda cans, Tinfoil, Water bottles	2-8 Hours
Copper	Pennies, Teakettles, Cookware	4 Hours
Food/Water	Doesn't seem to spread through food, and has not been found in water.	

HDP 24 x 18 PST153  
 UV 18 x 12 PST153C  
 PP 18 x 12 5/pk PST153PP



HDP 24 x 18 PST154  
 UV 18 x 12 PST154C  
 PP 18 x 12 5/pk PST154PP



HDP 18 x 24 PST151  
 UV 12 x 18 PST151C  
 PP 12 x 18 5/pk PST151PP



HDP 18 x 24 PST159  
 UV 12 x 18 PST159C  
 PP 12 x 18 5/pk PST159PP

**Material Reference Chart:**

HDP Heavy-Duty Poster Paper  
 UV Unrippable Vinyl  
 PP Poster Paper





## Illness Prevention

**STOP THE SPREAD OF GERMS**  
Help prevent the spread of respiratory diseases like COVID-19.

- Avoid close contact with people who are sick.
- Cover your mouth and nose with a tissue when you cough or sneeze. If you do not have a tissue, cough or sneeze into your elbow.
- Clean and disinfect frequently touched objects and surfaces.
- Avoid touching your eyes, nose, and mouth.
- Stay home when you are sick, except to get medical care.
- Wash your hands often with soap and water for at least 20 seconds.

For more information: [www.cdc.gov/COVID19](http://www.cdc.gov/COVID19)

HDP 24 x 18 PST139  
UV 18 x 12 PST139C  
PP 18 x 12 5/pk PST139PP

**DETENGA LA PROPAGACION DE LOS MICROBIOS**  
Ayuda a prevenir la propagación de virus respiratorios como el nuevo COVID-19.

- Evita el contacto cercano con las personas enfermas.
- Cúbrete el boca y la nariz con un pañuelo al toser o estornudar. Si no tienes un pañuelo, tóchalo en tu codo.
- Limpia y desinfecta frecuentemente los objetos que se tocan frecuentemente.
- Evita tocar tus ojos, nariz y boca.
- Quédate en casa si estás enfermo, excepto para buscar atención médica.
- Lávate las manos frecuentemente con agua y jabón por al menos 20 segundos.

Para obtener más información: [www.cdc.gov/COVID19](http://www.cdc.gov/COVID19)

HDP 24 x 18 PST140  
UV 18 x 12 PST140C  
PP 18 x 12 5/pk PST140PP

**STOP Feeling Sick?**  
Stay home when you are sick!

If you feel unwell or have the following symptoms  
**DO NOT ENTER THE BUILDING**

- FEVER
- COUGH
- SHORTNESS OF BREATH

If you are in the building please leave and contact your health care provider. Then follow-up with your supervisor.

For up-to-date information on Coronavirus Disease: [www.cdc.gov/CORONAVIRUS](http://www.cdc.gov/CORONAVIRUS)

HDP 24 x 18 PST142  
UV 18 x 12 PST142C  
PP 18 x 12 5/pk PST142PP

**PARE ¿Se siente enfermo?**  
¿Quédese en casa si está enfermo!

Si no se siente bien o tiene alguno de estos síntomas,  
**NO ENTRAR AL EDIFICIO**

- FIEBRE
- TOS
- DIFICULTAD PARA RESPIRAR

Si ya está en el edificio, salga y comuníquese con su proveedor de atención médica. Luego, póngase en contacto con su supervisor.

Para obtener información actualizada sobre la enfermedad por coronavirus: [www.cdc.gov/CORONAVIRUS](http://www.cdc.gov/CORONAVIRUS)

HDP 24 x 18 PST142SP  
UV 18 x 12 PST142CSP  
PP 18 x 12 5/pk PST142PPSP

**IF YOU HAVE**  
Fever, Cough, Shortness of breath

Please call our office before coming inside.  
Clinic Phone # \_\_\_\_\_

The clinic staff may ask you to wear a mask or use tissues to cover your cough.

Thank you for helping us keep our patients and staff safe.

For more information: [www.cdc.gov/COVID19](http://www.cdc.gov/COVID19)

HDP 24 x 18 PST143  
UV 18 x 12 PST143C  
PP 18 x 12 5/pk PST143PP

**SI USTED TIENE**  
Fiebre, Tos, Dificultad Para Respirar

Por favor llame a nuestra oficina antes de entrar.  
# de teléfono de la clínica \_\_\_\_\_

El personal de la clínica puede pedirle que use una máscara o use pañuelos para cubrirse la tos.

Gracias por ayudarnos a mantener seguros a nuestros pacientes y al personal.

Para más información: [www.cdc.gov/COVID19](http://www.cdc.gov/COVID19)

HDP 24 x 18 PST143SP  
UV 18 x 12 PST143CSP  
PP 18 x 12 5/pk PST143PPSP

**Use of Cloth Face Coverings to Help Slow the Spread of COVID-19**

**How to Wear Cloth Face Coverings**  
• Cloth face coverings should be worn against the side of the face.  
• Do not touch or adjust the face covering.  
• Do not use face coverings if you are coughing or sneezing.  
• Do not use face coverings if you are wearing a respirator or other face covering.  
• Do not use face coverings if you are wearing a hat or hood.  
• Do not use face coverings if you are wearing a mask that covers your eyes, nose, and mouth.  
• Do not use face coverings if you are wearing a mask that does not cover your nose and mouth.  
• Do not use face coverings if you are wearing a mask that is not made of a breathable fabric.  
• Do not use face coverings if you are wearing a mask that is not secured behind your head or neck.  
• Do not use face coverings if you are wearing a mask that is not secured under your chin.

**Should cloth face coverings be washed or otherwise disposed regularly? How regularly?**  
• Cloth face coverings should be washed or otherwise disposed regularly.  
• Cloth face coverings should be washed or otherwise disposed after each use.  
• Cloth face coverings should be washed or otherwise disposed after each use, even if they are not visibly soiled.

**How does one safely remove a cloth face covering?**  
• Do not touch the face covering when removing it.  
• Do not touch your face when removing it.  
• Do not touch your eyes, nose, or mouth when removing it.  
• Do not touch the face covering when disposing of it.

**How does one safely remove a used cloth face covering?**  
• Do not touch the face covering when removing it.  
• Do not touch your face when removing it.  
• Do not touch your eyes, nose, or mouth when removing it.  
• Do not touch the face covering when disposing of it.

For more information: [www.cdc.gov/coronavirus](http://www.cdc.gov/coronavirus)

HDP 24 x 18 PST144  
UV 18 x 12 PST144C  
PP 18 x 12 5/pk PST144PP

**Use una cubierta de tela para cara ayudar a desacelerar la propagación del COVID-19**

**Cómo usar una cubierta de tela para la cara**  
• La cubierta de tela debe cubrir la boca y la nariz.  
• La cubierta de tela debe cubrir los lados de la cara.  
• La cubierta de tela debe cubrir la parte inferior de la cara.  
• La cubierta de tela debe cubrir la parte superior de la cara.  
• La cubierta de tela debe cubrir la parte posterior de la cara.  
• La cubierta de tela debe cubrir la parte inferior de la cara.  
• La cubierta de tela debe cubrir la parte superior de la cara.  
• La cubierta de tela debe cubrir la parte posterior de la cara.  
• La cubierta de tela debe cubrir la parte inferior de la cara.  
• La cubierta de tela debe cubrir la parte superior de la cara.  
• La cubierta de tela debe cubrir la parte posterior de la cara.

**¿Cómo se debe retirar de manera segura una cubierta de tela para la cara usada?**  
• No toque la cubierta de tela cuando la retire.  
• No toque su cara cuando la retire.  
• No toque sus ojos, nariz o boca cuando la retire.  
• No toque la cubierta de tela cuando la deseché.

For more information: [www.cdc.gov/coronavirus](http://www.cdc.gov/coronavirus)

HDP 24 x 18 PST144SP  
UV 18 x 12 PST144CSP  
PP 18 x 12 5/pk PST144PPSP

**COVID-19 PROTECT YOURSELF!**  
Follow these Preventative Measures

- Wash your hands often with soap and water for at least 20 seconds.
- Avoid close contact with people who are sick.
- Cover your mouth and nose with a tissue when you cough or sneeze.
- Clean and disinfect frequently touched objects and surfaces.
- Stay home when you are sick, except to get medical care.
- Wash your hands often with soap and water for at least 20 seconds.
- Avoid close contact with people who are sick.
- Cover your mouth and nose with a tissue when you cough or sneeze.
- Clean and disinfect frequently touched objects and surfaces.
- Stay home when you are sick, except to get medical care.

What are the symptoms of COVID-19?  
• Fever  
• Cough  
• Shortness of breath

How can you prepare?  
• Wash your hands often with soap and water for at least 20 seconds.  
• Avoid close contact with people who are sick.  
• Cover your mouth and nose with a tissue when you cough or sneeze.  
• Clean and disinfect frequently touched objects and surfaces.  
• Stay home when you are sick, except to get medical care.

How does this Coronavirus Disease (COVID-19) spread?  
• The virus that causes COVID-19 seems to be spreading from person to person.

What if you get sick?  
• Stay home when you are sick, except to get medical care.  
• Wash your hands often with soap and water for at least 20 seconds.  
• Avoid close contact with people who are sick.  
• Cover your mouth and nose with a tissue when you cough or sneeze.  
• Clean and disinfect frequently touched objects and surfaces.  
• Stay home when you are sick, except to get medical care.

HDP 24 x 18 PST141  
UV 18 x 12 PST141C  
PP 18 x 12 5/pk PST141PP

**COVID-19 KEEP THE WORKPLACE SAFE**

**PRACTICE GOOD HYGIENE**  
• Wash hands frequently with soap and water for 20 seconds or use alcohol-based sanitizer.  
• Cover coughs and sneezes.  
• Disinfect surfaces like desks, tables, desks, and handrails regularly.  
• Increase ventilation by opening windows or adjusting air systems.

**BE CAREFUL WITH MEETINGS**  
• Use video conferencing or calls for meetings when possible.  
• Hold in-person meetings in open, well-ventilated spaces.  
• Consider adjusting or postponing large meetings or gatherings.

**HANDLE FOOD CAREFULLY**  
• Limit the sharing of food.  
• Ensure cafeteria staff and their close contacts practice good hygiene.

**STAY OR GO HOME IF...**  
• Stay home if you are sick.  
• Stay home if you have these symptoms:  
• Fever  
• Cough  
• Shortness of breath  
• Stay home if you have a sick family member or house.

**PREVENT THE SPREAD OF GERMS!**

HDP 24 x 18 PST149  
UV 18 x 12 PST149C  
PP 18 x 12 5/pk PST149PP

**Material Reference Chart:**

HDP	Heavy-Duty Poster Paper
UV	Unrippable Vinyl
PP	Poster Paper

**Hand Washing**



HDP 24 x 18 PST152  
 UV 18 x 12 PST152C  
 PP 18 x 12 5/pk PST152PP



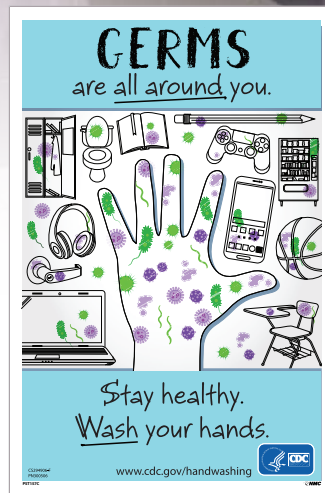
HDP 24 x 18 PST152SP  
 UV 18 x 12 PST152CSP  
 PP 18 x 12 5/pk PST152PPSP



HDP 24 x 18 PST156  
 UV 18 x 12 PST156C  
 PP 18 x 12 5/pk PST156PP



HDP 24 x 18 PST156SP  
 UV 18 x 12 PST156CSP  
 PP 18 x 12 5/pk PST156PPSP



HDP 24 x 18 PST157  
 UV 18 x 12 PST157C  
 PP 18 x 12 5/pk PST157PP



HDP 24 x 18 PST157SP  
 UV 18 x 12 PST157CSP  
 PP 18 x 12 5/pk PST157PPSP



HDP 18 x 24 PST137  
 UV 12 x 18 PST137C  
 PP 12 x 18 5/pk PST137PP



HDP 18 x 24 PST138  
 UV 12 x 18 PST138C  
 PP 12 x 18 5/pk PST138PP

**Material Reference Chart:**  
**HDP** Heavy-Duty Poster Paper  
**UV** Unrippable Vinyl  
**PP** Poster Paper



# COVID-19 Large Format Signs

Made of lightweight, durable aluminum composite (ACP), these signs convey important messaging at a distance.



2' x 4' English/Spanish M6524ACP  
4' x 8' English/Spanish M6548ACP

**COVID-19 PROTECT YOURSELF!**

**Follow these Preventative Measures**

- Wash your hands often with soap and water for at least 20 seconds.
- If soap and water are not available use a hand sanitizer with at least 60% alcohol.
- Maintain a 6 foot distance between people whenever possible.
- Avoid touching your eyes, nose, and mouth.
- Cover your mouth and nose when you cough or sneeze.

2' x 4' English M6124ACP  
4' x 8' English M6148ACP

**COVID-19 ¡PROTÉGETE!**

**Sigue Estas Medidas Preventivas**

- Lávate las manos a menudo con agua y jabón durante al menos 20 segundos.
- Si no hay agua y jabón, usa un desinfectante para manos con al menos un 60% de alcohol.
- Mantén una distancia de 6 pies entre las personas siempre que sea posible.
- Evita tocarte los ojos, la nariz y la boca.
- Cúbrete la boca y la nariz al toser o estornudar.

2' x 4' Spanish M6124ACPSP  
4' x 8' Spanish M6148ACPSP

**Give each other space. 6 feet**

**COVID-19 Safety Precautions**

Stay home if you are sick.

Wash your hands often with soap and water for at least 20 seconds.

If soap and water are not available use hand sanitizer with at least 60% alcohol.

Maintain a 6 foot distance between people whenever possible.

Wear a mask when close contact cannot be avoided.

Avoid touching your eyes, nose, and mouth.

Cover your mouth and nose when you cough or sneeze.

**Feeling Sick? DO NOT ENTER THE JOB SITE**

If you feel unwell or have the following symptoms

FEVER COUGH SHORTNESS OF BREATH

If you start feeling symptoms while you are at work please leave and contact your health care provider. Then follow-up with your supervisor.

2' x 4' English M6224ACP  
4' x 8' English M6248ACP

**Darse espacio el uno al otro. 6 pies**

**COVID-19 Precauciones de seguridad**

Quédete en casa si estás enfermo.

Lávate las manos a menudo con agua y jabón durante al menos 20 segundos.

Si no hay agua y jabón, usa un desinfectante para manos con al menos un 60% de alcohol.

Mantén una distancia de 6 pies entre las personas siempre que sea posible.

Usar una máscara cuando no pueda evitarse el contacto cercano.

Evita tocarte los ojos, la nariz y la boca.

Cúbrete la boca y la nariz al toser o estornudar.

**¿Se siente enfermo? NO ENTRE AL LUGAR DE TRABAJO**

Si se siente mal o tiene los siguientes síntomas

FEBRE TOS FALTA DE ALIENTO

Si comienza a sentir síntomas mientras estás en el trabajo por favor retírate y contacta a su proveedor de atención médica. Luego contacte a su supervisor.

2' x 4' Spanish M6224ACPSP  
4' x 8' Spanish M6248ACPSP





# COVID-19 Mesh Fence Banners

Keep workers and visitors informed and protected by conveying important COVID-19 safety information visible at all times.

- Durable mesh banner with reinforced grommets
- Mesh material allows for air flow
- Ideal for job site/facility use
- Sized specifically for use on fencing



6' x 12' English BT61  
 5' x 10' English BT561  
 6' x 12' Spanish SPBT61  
 5' x 10' Spanish SPBT561



6' x 12' English BT62  
 5' x 10' English BT562  
 6' x 12' Spanish SPBT62  
 5' x 10' Spanish SPBT562





36 x 120 English BT63  
36 x 60 English BT563

# Motivational & Safety Vinyl Banners

Convey your commitment to safety and employee well-being with motivational and informative banners. Durable for outdoor use. Features reinforced grommets.



36 x 120 English BT67  
36 x 60 English BT567



36 x 120 English BT64  
36 x 60 English BT564



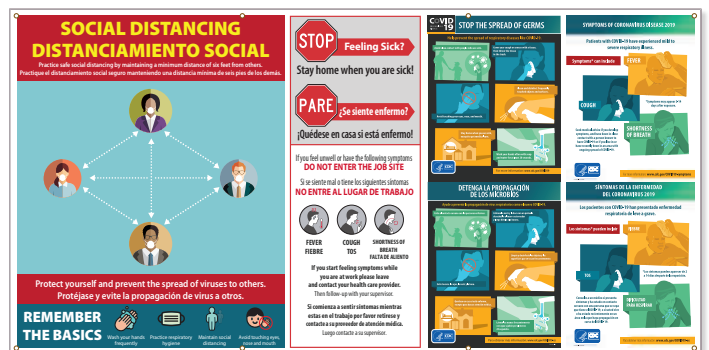
36 x 120 English BT69  
36 x 60 English BT569



36 x 120 English BT66  
36 x 60 English BT566



52 x 104 English/Spanish BT65  
61 x 120 English/Spanish BT565



52 x 104 English/Spanish BT68  
61 x 120 English/Spanish BT568





ISO674CL & ISO670CL Shown



# Labels, Door & Window Clings

**Display labels in high-traffic areas for increased awareness.**

Protect employees and remind visitors and contractors about safe practices within your facility or retail location. Labels are ideal for placement on door entrances or on restroom mirrors. Available with clear background for a clean professional look.

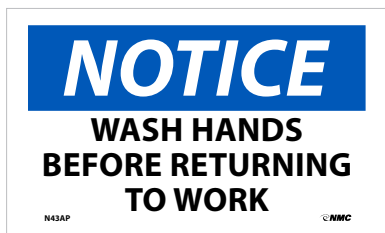
## Handwashing



PSV 3 x 5 WH4AP  
PBR 3 x 5 WH4APR



PSV 3 x 5 N362AP



PSV 3 x 5 N43AP  
PBR 3 x 5 N43APR

MATERIAL	QUANTITY
Pressure Sensitive Removable Vinyl (PBR)	5/Pk
Pressure Sensitive Vinyl (PSV)	5/Pk



2" Dia. ISO270AP  
2" Dia. Clear ISO270CL  
4" Dia. ISO470AP  
4" Dia. Clear ISO470CL  
6" Dia. ISO670AP  
6" Dia. Clear ISO670CL



2" Dia. ISO217AP  
4" Dia. ISO417AP  
6" Dia. ISO617AP

MATERIAL	DESCRIPTION
Pressure Sensitive Vinyl	2" Diameter, 10/Pk
Pressure Sensitive Vinyl	4" Diameter, 5/Pk
Pressure Sensitive Vinyl	6" Diameter, 5/Pk
Pressure Sensitive Vinyl, Clear	2" Diameter, Clear, 10/Pk
Pressure Sensitive Vinyl, Clear	4" Diameter, Clear, 5/Pk
Pressure Sensitive Vinyl, Clear	6" Diameter, Clear, 5/Pk

Clear versions are reverse printed, and can be placed on the interior of windows and glass doors, while being viewed from the other side.



## Social Distancing Guidance Labels



PSV 4" Dia. ISO471AP  
PSV 6" Dia. ISO671AP



PSV 4" Dia. ISO472AP  
PSV 6" Dia. ISO672AP



PSV 4" Dia. ISO473AP  
PSV 6" Dia. ISO673AP



PSV 4" Dia. ISO474AP  
PSV, Clear 4" Dia. ISO474CL  
PSV 6" Dia. ISO674AP  
PSV, Clear 6" Dia. ISO674CL



PSV 4" Dia. ISO475AP  
PSV, Clear 4" Dia. ISO475CL  
PSV 6" Dia. ISO675AP  
PSV, Clear 6" Dia. ISO675CL



PSV 4" Dia. ISO476AP  
PSV, Clear 4" Dia. ISO476CL  
PSV 6" Dia. ISO676AP  
PSV, Clear 6" Dia. ISO676CL

MATERIAL	DESCRIPTION
Pressure Sensitive Vinyl	4" Diameter, 5/Pk
Pressure Sensitive Vinyl	6" Diameter, 5/Pk
Pressure Sensitive Vinyl, Clear	4" Diameter, Clear, 5/Pk
Pressure Sensitive Vinyl, Clear	6" Diameter, Clear, 5/Pk

Clear versions are reverse printed, and can be placed on the interior of windows and glass doors, while being viewed from the other side.



## Hard Hat Style Labels

- 2" Diameter
- Adhesive Pressure Sensitive Vinyl (PSV)
- 25/Pack



HH20



HH20R  
(Reflective)



HH172



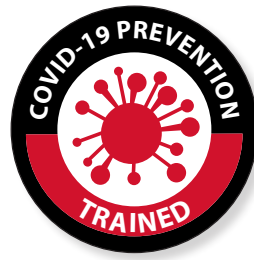
HH173



HH48



HH48R  
(Reflective)



HH174



HH175

## ICE Hard Hat Label

- 100% Waterproof
- 2.75" x .5"
- 25/Pack



PART NO.  
HH205



# Don't see what you need?

Our Customer Support Team is here to help you every step of the way.

## Reach out today to get started!





# Social Distancing Floor Signs

A healthy public drives the American economy. Mark your workplace or retail location to encourage social distancing with NMC's wide selection of adhesive backed, peel-and-stick floor signs.

Choose a material to suit your needs:

## TexWalk® Floor Signs



**0-6 MONTHS**

- Ideal for retail and basic office use
- Removable, leaves no residue
- May be used on low profile carpets
- Print protected with Sign Muscle® coating

## Temp-Step™ Non-Slip Floor Signs

**6-9 MONTHS**

- Ideal for light industrial and retail applications
- Removable, leaves no residue
- Non-slip surface

## Walk-On™ Anti-Skid Floor Signs

**9+ MONTHS**

- Ideal for workplace/industrial applications
- Longer term indoor/short term outdoor use
- Aggressive adhesive
- Anti-skid surface

# Social Distancing Floor Markings



TexWalk®	7.625 x 19.625	WFS75TX
Temp-Step™	8 x 20	WFS75A
Walk-On™	8 x 20	WFS75



TexWalk®	7.625 x 19.625	WFS74TX
Temp-Step™	8 x 20	WFS74A
Walk-On™	8 x 20	WFS74



TexWalk®	7.625 x 19.625	WFS77TX
Temp-Step™	8 x 20	WFS77A
Walk-On™	8 x 20	WFS77



TexWalk®	7.625 x 19.625	WFS76TX
Temp-Step™	8 x 20	WFS76A
Walk-On™	8 x 20	WFS76



TexWalk®	11.75 x 11.75	WFS79TXYL
Temp-Step™	12 x 12	WFS79AYL
Walk-On™	12 x 12	WFS79YL



TexWalk®	11.75 x 11.75	WFS79TXRD
Temp-Step™	12 x 12	WFS79ARD
Walk-On™	12 x 12	WFS79RD



TexWalk®	11.75 x 11.75	WFS71TX
Temp-Step™	12 x 12	WFS71A
Walk-On™	12 x 12	WFS71



TexWalk®	11.75 x 11.75	WFS72TX
Temp-Step™	12 x 12	WFS72A
Walk-On™	12 x 12	WFS72



TexWalk®	11.75 x 11.75	WFS73TX
Temp-Step™	12 x 12	WFS73A
Walk-On™	12 x 12	WFS73



TexWalk®	WFS85TXBK	WFS85TXBL	WFS85TXGR	WFS85TXRD	WFS85TXYL	6 x 4 10/Pk
Temp-Step™	WFS85ABK	WFS85ABL	WFS85AGR	WFS85ARD	WFS85AYL	6 x 4 10/Pk
Walk-On™	WFS85BK	WFS85BL	WFS85GR	WFS85RD	WFS85YL	6 x 4 10/Pk



# Social Distancing Floor Signs

8" DIA.



- TexWalk® WFS83TXRD
- TexWalk® WFS83TXRD10 10pk
- Temp-Step™ WFS83AR
- Temp-Step™ WFS83ARD10 10pk
- Walk-On™ WFS83RD
- Walk-On™ WFS83RD10 10pk



- TexWalk® WFS83TXYL
- TexWalk® WFS83TXYL10 10pk
- Temp-Step™ WFS83AYL
- Temp-Step™ WFS83AYL10 10pk
- Walk-On™ WFS83YL
- Walk-On™ WFS83YL10 10pk



- TexWalk® WFS82TX
- TexWalk® WFS82TX10 10pk
- Temp-Step™ WFS82A
- Temp-Step™ WFS82A10 10pk
- Walk-On™ WFS82
- Walk-On™ WFS8210 10pk



- TexWalk® WFS84TXRD
- TexWalk® WFS84TXRD10 10pk
- Temp-Step™ WFS84ARD
- Temp-Step™ WFS84ARD10 10pk
- Walk-On™ WFS84RD
- Walk-On™ WFS84RD10 10pk



- TexWalk® WFS84TXYL
- TexWalk® WFS84TXYL10 10pk
- Temp-Step™ WFS84AYL
- Temp-Step™ WFS84AYL10 10pk
- Walk-On™ WFS84YL
- Walk-On™ WFS84YL10 10pk



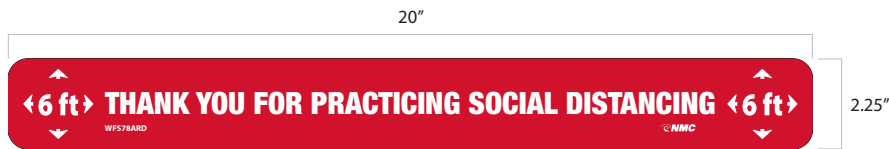
**CUSTOM LEGENDS AVAILABLE**  
Call us today to get started!





# Social Distancing Floor Marking Strips

Create a clear directive for any situation requiring social distance. Let visitors know where to wait to keep an appropriate distance, decreasing confusion and the transmission of airborne illness.



TexWalk®	WFS78TXRD	
TexWalk®	WFS78TXRD10	10 pk
Temp-Step™	WFS78ARD	
Temp-Step™	WFS78ARD10	10 pk
Walk-On™	WFS78RD	
Walk-On™	WFS78RD10	10 pk



TexWalk®	WFS78TXYL	
TexWalk®	WFS78TXYL10	10 pk
Temp-Step™	WFS78AYL	
Temp-Step™	WFS78AYL10	10 pk
Walk-On™	WFS78YL	
Walk-On™	WFS78YL10	10 pk



TexWalk®	WFS80TX	
TexWalk®	WFS80TX10	10 pk
Temp-Step™	WFS80A	
Temp-Step™	WFS80A10	10 pk
Walk-On™	WFS80	
Walk-On™	WFS8010	10 pk



TexWalk®	WFS81TX	
TexWalk®	WFS81TX10	10 pk
Temp-Step™	WFS81A	
Temp-Step™	WFS81A10	10 pk
Walk-On™	WFS81	
Walk-On™	WFS8110	10 pk

# Projector & Illness Prevention Lenses

Communicate important safety messages in a highly visible and impactful way. Great for loading docks, manufacturing floors, retail locations & more.

- Perfect for high traffic areas (pedestrian, forklift & other)
- Zero wear and tear vs. traditional floor signs
- Portable & easy to install
- Fan cooled technology prevents overheating
- Projects up to 262 ft
- Remote control and mounting kit included



**Custom Lenses Available\***

\*21 day lead time from time of order



**Wait Here**

Projector & Lens VSP5  
Lens Only VSPL5



**6 Feet**

Projector & Lens VSP6  
Lens Only VSPL6



**Social Distancing**

Projector & Lens VSP7  
Lens Only VSPL7

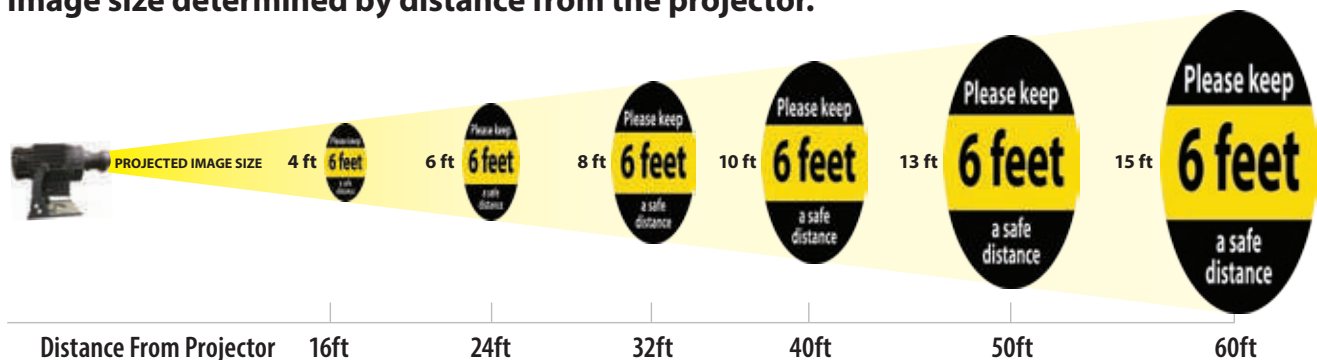


**No Handshakes**

Projector & Lens VSP8  
Lens Only VSPL8

## Distance Chart

Image size determined by distance from the projector.

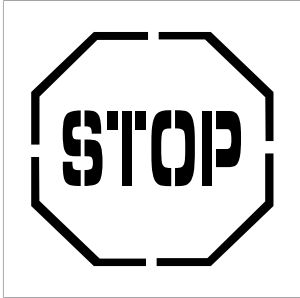




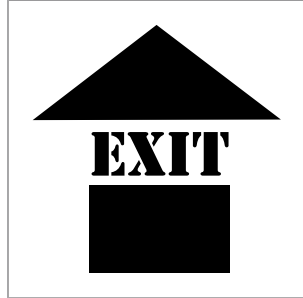
# Stencils

Use reusable stencils to mark sidewalks, parking lots or other areas to quickly and easily display lasting messages.

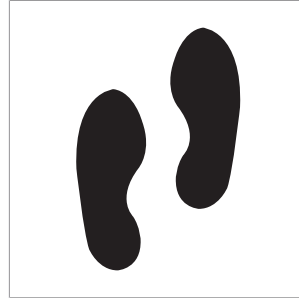
SIZE  
24" x 24"



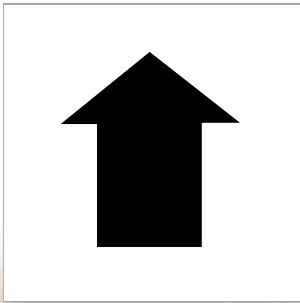
PMS203



PMS209



PMS229



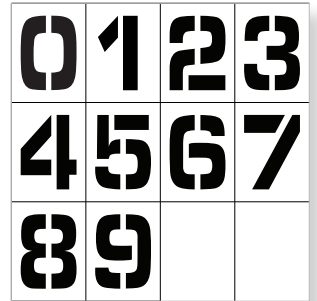
PMS221



PMS55



PMS56



PMN12  
Stencil Number Set 0-9

ITEM NO	CHARACTER HEIGHT
PMN12	12"
PMN36	36"





# Distancing & Crowd Control

Waterproof and wear resistant 6 mil vinyl tape applies easily to clean, smooth, dry surfaces with a synthetic rubber resin adhesive and has a temp resistance of -20°F to 175°F. Perfect for:

- Color-coding
- Aisle marking
- Duct sealing
- Abrasion protection
- Joint sealing
- Pipe wrapping
- Light bundling
- Packing
- Safety marking
- Social Distancing









## Solid Color Safety Tapes

COLOR	SIZE	PART NO.
BLACK	2" x 108'	T214
	3" x 108'	T244
WHITE	2" x 108'	T206
	3" x 108'	T236
ORANGE	2" x 108'	T209
	3" x 108'	T239
BLUE	2" x 108'	T210
	3" x 108'	T240
GREEN	2" x 108'	T208
	3" x 108'	T238
YELLOW	2" x 108'	T205
	3" x 108'	T235
RED	2" x 108'	T204
	3" x 108'	T234
BROWN	2" x 108'	T212
	3" x 108'	T242



## Striped Safety Tapes

COLOR	SIZE	PART NO.
	2" x 54'	T20218
	2" x 108'	T20236
	3" x 54'	T22018
	3" x 108'	T22036
	2" x 54'	T20718
	2" x 108'	T20736
	2" x 54'	T20118
	2" x 108'	T20136
	3" x 54'	T22118
	3" x 108'	T22136
	2" x 54'	T20318
	2" x 108'	T20336
	3" x 54'	T22318
	2" x 54'	T20418
	2" x 108'	T20436
	3" x 54'	T22418
	3" x 108'	T22436
	2" x 54'	T20918
	2" x 108'	T20936
	3" x 54'	T22918
	2" x 54'	T20818
	2" x 108'	T20836
	3" x 54'	T22818
	3" x 108'	T22836

## Marking Tape Floor Applicator

Mark specific areas to promote safety.

- Stable, stand-alone design
- Holds up to a 4" x 180' roll of floor marking or a 4" x 150' roll of pavement marking tape
- Large wheel base for smooth tape placement
- Heavy duty construction
- Minimal assembly required

PART NO.
FTA01



# Distancing & Crowd Control

Built to withstand industrial traffic, 30 & 50 mil thick floor marking tapes provide a durable solution that goes down easy and cleans up just as well.

- Designed for long-term floor marking
- Smooth, easy to clean, slip resistant
- Dual beveled edges allow industrial wheels to roll over smoothly (50 mil option)
- Leaves no residue when removed
- Faster to install than paint, with zero downtime

## Heavy-Duty Floor Tape

- 50 mil thickness
- Material: PVC



## Durable Floor Tape

- 30 mil thickness
- Material: Vinyl



COLOR	PART NO.	SIZE
YELLOW	DT2Y	2" X 100'
	DT4Y	4" X 100'
RED	DT2R	2" X 100'
	DT4R	4" X 100'
BLUE	DT2B	2" X 100'
	DT4B	4" X 100'
GREEN	DT2G	2" X 100'
	DT4G	4" X 100'

COLOR	PART NO.	SIZE
YELLOW	HDT2Y	2" X 100'
	HDT3Y	3" X 100'
	HDT4Y	4" X 100'
RED	HDT2R	2" X 100'
	HDT3R	3" X 100'
	HDT4R	4" X 100'
BLUE	HDT2B	2" X 100'
	HDT3B	3" X 100'
	HDT4B	4" X 100'
GREEN	HDT2G	2" X 100'
	HDT3G	3" X 100'
	HDT4G	4" X 100'
BLACK	HDT2BK	2" X 100'
	HDT3BK	3" X 100'
	HDT4BK	4" X 100'
ORANGE	HDT2OR	2" X 100'
	HDT3OR	3" X 100'
	HDT4OR	4" X 100'
YELLOW BLACK STRIPE	HDT2BKYL	2" X 100'
	HDT3BKYL	3" X 100'
	HDT4BKYL	4" X 100'

## Floor Markings

Ideal for directing foot traffic and creating pathways.

- Includes 25 per pack
- 50 mil thick for long-term application & use
- Designed to withstand industrial traffic
- Rubber based pressure sensitive adhesive
- Service temp range -10°F to 150°F
- Application temp range 40°F to 150°F

## T-Markers

PART NO.	COLOR
LN125	Red
LN126	Yellow
LN127	Blue
LN128	Green
LN129	Black w/ White Stripe
LN130	Black w/ Yellow Stripe



6" x 6" x 2"

## Corner Marker Angles

PART NO.	COLOR
LN119	Red
LN120	Yellow
LN121	Blue
LN122	Green
LN123	Black w/ White Stripe
LN124	Black w/ Yellow Stripe



6" x 6" x 2"

## Marking Dots

PART NO.	COLOR
LN131	Red
LN132	Yellow
LN133	Blue
LN134	Green
LN135	White



3.5" Dia.

## Footprints

PART NO.	COLOR
LN114	Red
LN115	Yellow
LN116	Blue
LN117	Green
LN118	White



3.5" x 9.5"



# A-Frame Signs & Stands

## Signage for Outdoor Use

NMC's Deluxe A-Frame Sidewalk & Parking lot signs are ideal for directing pedestrian and motorized traffic.

- Stand Measures 45" x 25"
- Sign Measures 36" x 24"
- Includes one sign
- Double-sided (stand can hold two signs, one on each side) – additional signs sold separately
- High-density impact plastic
- Sign made of corrugated plastic (sign is removable)
- No tools, tape or screws needed – simply fold-out and go
- Custom messages available



Sign & Stand: SFS114C-KIT  
Sign Only: SFS114C



Sign & Stand: SFS115C-KIT  
Sign Only: SFS115C



Sign & Stand: SFS116C-KIT  
Sign Only: SFS116C



Sign & Stand: SFS110C-KIT  
Sign Only: SFS110C



Sign & Stand: SFS111C-KIT  
Sign Only: SFS111C



Sign & Stand: SFS112C-KIT  
Sign Only: SFS112C



Sign & Stand: SFS113C-KIT  
Sign Only: SFS113C

**Double Sided, Reversible Floor Signs**



FS42



FS43



FS44



FS45



FS46



FS47



FS48



FS49

**MATERIAL**  
19 x 12 Corrugated Polyethylene



FS46 Shown



## Cones & Cone Top Signs



CS29



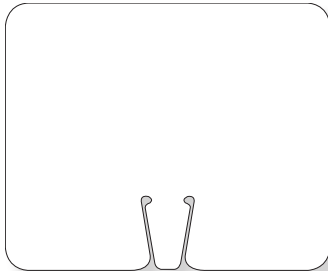
CS30



CS31



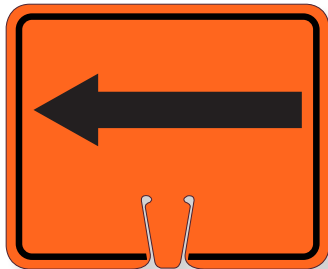
CS15



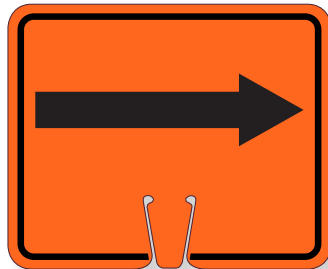
CS2



CS1



CS4



CS5



CS8



CS9

10.375 X 12.625
Material
Rigid Plastic



Cone & Cone Top Sign sold separately



Cone Top Signs fit TPC2 only



TPC2



TFS304

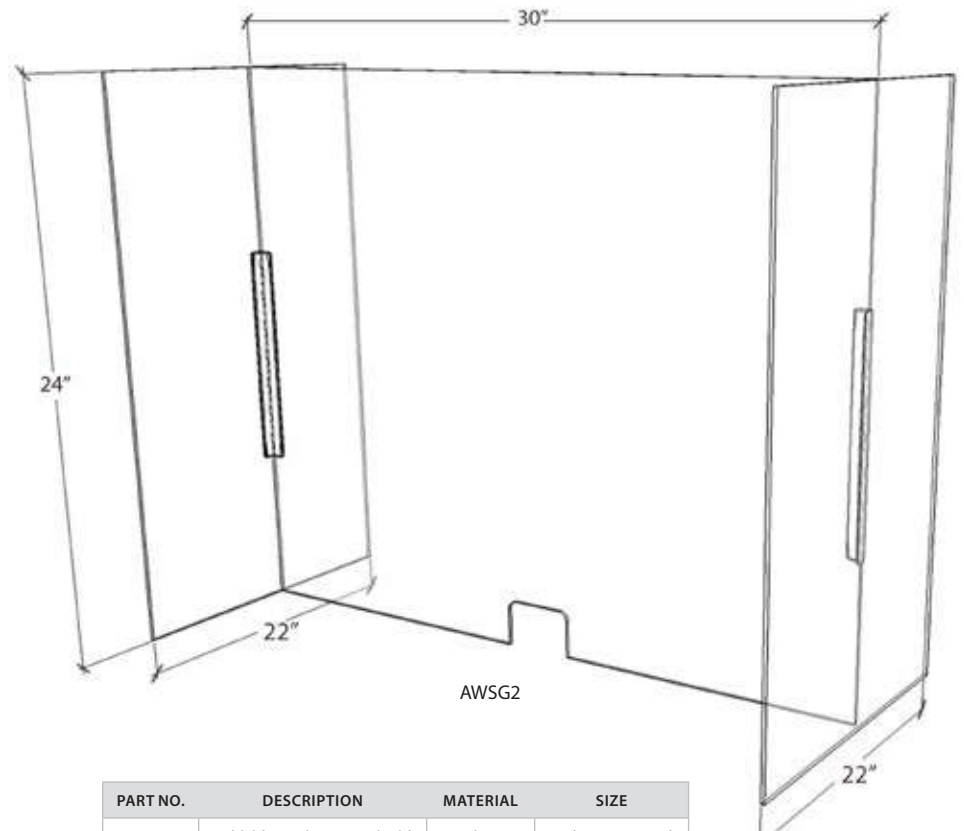
ITEM NO.	SIZE
TPC2	Orange, 18 x 10.5. 1/case

ITEM NO.	DESCRIPTION
TFS304	Tri-View, 40 x 15, 3/case

# Work Station Guards

Open office concepts present unique challenges as employers and employees are sensitive to controlling the spread of communicable diseases. Work Station Guards provide a stop-gap solution. Place guards to help keep workers healthy and prevent the spread of viruses.

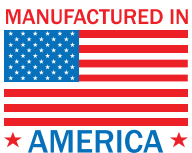
- Made of acrylic
- Easy to clean
- Portable/storable
- Sturdy 3-sided hinge design
- Fully customizable



**Don't see what you need?**

Our Customer Support Team is here to help you every step of the way.

**Reach out today to get started!**



PART NO.	DESCRIPTION	MATERIAL	SIZE
AWSG1	Foldable Work Station Shield	Acrylic .177	24"h X 30"w , 14"d
AWSG2	Foldable Work Station Shield	Acrylic .177	24"h X 30"w , 22"d

# Acrylic PPE Dispensers

Workers need to use personal safety protection everyday, and they need easy access to PPE on site with convenient dispensers.

- Widest selection of standard dispensers
- Convenient and economical
- Hassle-free ordering with FAST shipping
- Superior acrylic quality
- American made
- No Minimums
- Most Styles include free identification labels



## Glove Dispenser

Comes in 3 sizes to accommodate any range of needs.

- 15 x 10.75 holds 3 boxes of gloves
- 10 x 10.75 holds 2 boxes of gloves
- 5 x 10.75 holds 1 box of gloves
- Table or wall mount

ITEM NO	SIZE
AGBT	15 x 10.75
AGBD	10 x 10.75
AGBS	5 x 10.75



AGBT

## Visitor Spec Dispenser

- Features bottom door to keep glasses in place
- Dimensions: 18 x 8 x 4
- Holds up to approx. 20 pairs
- Table or wall mount



ASG-D

## Miscellaneous PPE Dispenser

Store a wide range of PPE supplies such as bouffants, booties, gloves, earplugs, etc.

- Size: 10 x 10 x 10
- 4" round opening in front for easy access
- Table or wall mount



ADB

## Mini Multi-Use Dispenser with Cover

Easy to store PPE dispenser protects contents with a full cover.

- Size: 12 x 6.5
- Lid protects PPE from airborne contaminants, dust & debris
- Table or wall mount



ADM1



## Customize your dispensers

Get your message noticed with custom designed acrylic and label options!



# Biohazard

Biohazard areas can be dangerous due to many hazards not being visible to the human eye. Clearly mark biohazard areas with proper identification products including floor signs, labels, signs, and barricade tape.

## Double-Sided Floor Signs

- Made of lightweight 4 mm corrugated polyethylene
- Printed on four sides, one message on the outside and another message on the inside
- Water-proof
- Folds easily for convenient storage
- 19" x 12"



FS37



## Signs & Labels

Includes the universally recognized biohazard symbol and meet OSHA's marking requirement in standard 1910.1030 for bloodborne pathogens.



PSP 1 x 3, 500/Roll WOL6



PSP 1 x 3, 500/Roll WOL7



PSV 7 x 7 S92P  
RB 7 x 7 S92R



PSV 7 x 7 S93P  
RB 7 x 7 S93R



PSV 4 x 4, 5/Pk S52AP  
PSV 7 x 7 S52P  
RB 7 x 7 S52R  
PSP 3 x 3, 500/Roll S52RL



PSV 10 x 18 SPSA52P  
RB 10 x 18 SPSA52R

MATERIALS
Pressure Sensitive Vinyl (PSV)
Pressure Sensitive Paper (PSP)
Rigid Plastic (RB)

## Tags

The use of tags is permitted for compliance, as outlined in OSHA standard 1910.145. Biohazard tags measuring 6" x 3" are versatile when labels may not be the ideal solution.

- Pack of 25



RPT54

## Barricade Tape

Biohazard barricade tape measures 3" by 1000-ft long with a continuous repeat of the text shown below.



PT40

# Back to Work Kits

## Key products kitted to address your immediate back to work needs

Kits provide the essentials you need to begin properly identifying your facility as the doors open to workers, customers, contractors, vendors and others. Choose from three kits geared towards small, medium, or large facilities.

Each kit contains applicable products in a variety of quantities to communicate important health and safety measures from lobby to loading dock.

- Be ready to re-open your business
- Provide clear, professional messaging
- Product assortments based on best sellers
- Kits contain handwashing signs, posters, floor tapes and social distancing floor signs



## Small Kit

ITEM NO.
BWK01



- (1) 5/Pack of 6" dia. clear PSV, NO HANDSHAKE labels
- (1) 10 x 14 Rigid Plastic, NOTICE PRACTICE SOCIAL DISTANCING sign
- (1) 14 x 10 PSV, NOTICE FACE MASK REQUIRED sign
- (2) 5/Packs of 3 x 5 PSV, NOTICE WASH YOUR HANDS BEFORE RETURNING TO WORK labels
- (4) 7 x 10 Rigid Plastic, WASH YOUR HANDS signs
- (2) 18 x 24 Heavy-Duty Poster Paper, WASH YOUR HANDS posters
- (1) 24 x 18 Heavy-Duty Poster Paper, STOP THE SPREAD OF GERMS poster
- (2) Rolls of 2 x 108' Yellow 6-mil Floor Tape
- (2) 12 x 12 SOCIAL DISTANCING floor signs in Walk-On™ material
- (2) 12 x 12 PLEASE KEEP A SAFE DISTANCE floor signs in Walk-On™ material

## Medium Kit

ITEM NO.
BWK02



- (2) 5/Packs of 6" dia. Clear PSV, NO HANDSHAKE labels
- (2) 10 x 14 Rigid Plastic, NOTICE PRACTICE SOCIAL DISTANCING signs
- (2) 5/Packs of 3 x 5 PSV, NOTICE WASH YOUR HANDS BEFORE RETURNING TO WORK labels
- (6) 7 x 10 Rigid Plastic, WASH YOUR HANDS signs
- (4) 14 x 10, PSV, NOTICE FACE MASK REQUIRED signs
- (1) 5/Pack of 18 x 12, Paper, USE OF CLOTH FACE COVERINGS posters
- (1) 5/Pack of 18 x 12, Paper, GUIDELINES FOR WEARING A MASK posters
- (4) 12 x 18 Unrippable Vinyl, WASH YOUR HANDS posters
- (2) 24 x 18 Heavy-Duty Poster Paper, STOP THE SPREAD OF GERMS poster
- (3) Rolls of 2 x 108' Yellow 6-mil Floor Tape
- (2) 12 x 12 SOCIAL DISTANCING floor signs in Walk-On™ material
- (2) 10/Packs of 2.25 x 20 THANK YOUR FOR PRACTICING SOCIAL DISTANCING floor strips in of Temp-Step™ material
- (2) 12 x 12 PLEASE KEEP A SAFE DISTANCE floor signs in Walk-On™ material
- (2) 6 x 9 Plastic HAND SANITIZING STATION 3D wall signs

## Large Kit

ITEM NO.
BWK03



- (2) 5/Packs of 6" dia. clear PSV, NO HANDSHAKE labels
- (4) 10 x 14 Rigid Plastic, NOTICE PRACTICE SOCIAL DISTANCING signs
- (4) 5/Packs of 3 x 5 Removable PSV, NOTICE WASH YOUR HANDS BEFORE RETURNING TO WORK labels
- (6) 7 x 10 Rigid Plastic, WASH YOUR HANDS signs
- (2) 14 x 10 Rigid Plastic, TEMPERATURE CHECK STATION signs
- (6) 14 x 10, PSV, NOTICE FACE MASK REQUIRED signs
- (4) 5/Packs of 18 x 12 Paper, USE OF CLOTH FACE COVERINGS posters
- (2) 5/Packs of 8 x 12 Paper, GUIDELINES FOR WEARING A MASK posters
- (2) 18 x 12 Unrippable Vinyl, WELCOME NO HAND SHAKES posters
- (2) 18 x 24 Heavy Duty Poster Paper, WASH YOUR HANDS posters
- (4) 18 x 24 Heavy Duty Poster Paper, STOP THE SPREAD OF GERMS posters
- (4) Rolls of 2 x 108' Yellow 6-mil Floor Tape
- (4) 12 x 12 SOCIAL DISTANCING floor signs in Walk-On™ material
- (3) 10/Packs of 2.25 x 20 THANK YOUR FOR PRACTICING SOCIAL DISTANCING floor strips in Temp-Step™ material
- (4) 12 x 12 PLEASE KEEP A SAFE DISTANCE floor signs in Walk-On™ material
- (4) 6 x 9 Plastic HAND SANITIZING STATION 3D wall signs



# COVID-19 Tyvek® Workplace & Jobsite SCREENING WRISTBANDS



## Make Safety Visible with Tyvek® Screening Wristbands



QTY
500/Box

### DESCRIPTION:

NMC's Tyvek® 3/4" x 10" COVID-19 Workplace & Jobsite Screening Wristbands were created with employee health and well-being in mind. Wristbands are pre-printed with messaging to showcase who should/should not be on a job-site or in the workplace. NMC offers a variety of colors and designs including prescreen, visitor, temperature, and days of the week. Custom messages are available.

### FEATURES:

- Made with durable, 100% DuPont™ Tyvek®
- Secure and tamper-evident closure
- Sequentially numbered for accountability
- Waterproof and tear-resistant
- Ideal for short-term use: 1-2 days
- Custom imprinting, barcoding and custom numbering available
- Made in the U.S.A



WB01BL



WB01SB



WB01YL



WB01AQ



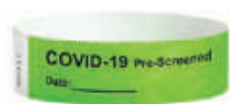
WB01RD



WB01GR



WB01OR



WB02GR

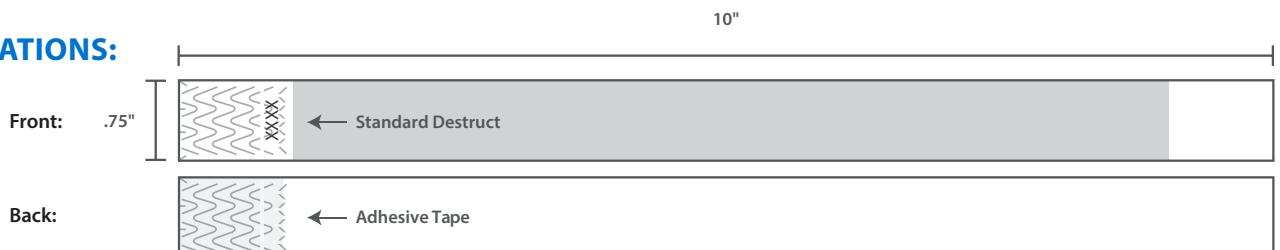


WB03RD



WB04PK

### 3/4" SPECIFICATIONS:



Tyvek® is a registered trademark of DuPont®.



# THE LAST SIGN YOU WILL EVER BUY™

Sign Muscle® is Polymer Coating that preserves the life of your NMC signs and labels.



Resists Fading!



Make Clean Up Easy!



Easily Restored Like New

Many items in this catalog include Sign Muscle® for free!

These sign and label material references include Sign Muscle®.

- PSV** Pressure Sensitive Vinyl
- PBR** Removable Adhesive Backed Vinyl
- RB** Rigid Plastic
- AL** Aluminum

Additional products such as TexWalk® and Large Format Signs also include Sign Muscle®.

**Protection Applied Free, Guaranteed for Life!**

